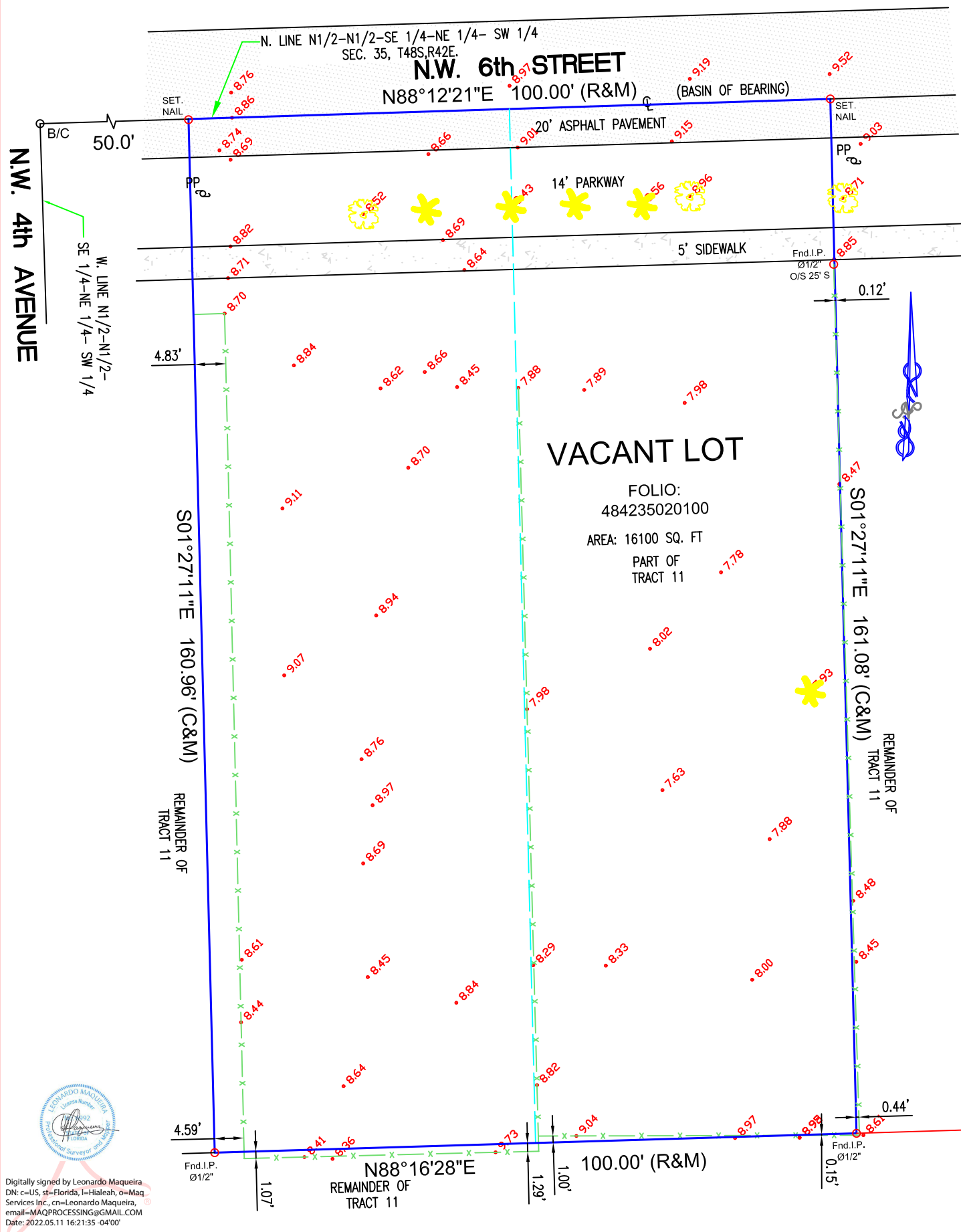




MAQ SERVICES, INC.
Professional Land Surveyors, Mapper
CERTIFICATE No.L.B. 8064
STATE OF FLORIDA
Main Line: (305) 901-1317
Fax: (305) 901-1323

PAGE 2 OF 2
NOT VALID WITHOUT PAGE 1 OF 2
JOB No. 21-08344
SCALE: 1" = 20'

BOUNDARY SURVEY



Digitally signed by Leonardo Maqueira
DN: c=US, st=Florida, l=Hialeah, o=Maq
Services Inc., cn=Leonardo Maqueira,
email=MAQPROCESSING@GMAIL.COM
Date: 2022.05.11 16:21:35 -04'00'

LEGEND AND ABBREVIATIONS

0.00 = ELEVATION	F.N. = FOUND NAIL	E.M. = ELECTRIC METER	CONCRETE FOUNDATION
DRWY. = DRIVEWAY	P.O.C. = POINT OF COMMON-CEMENT	P.I. = POINT OF INTERSECTION	Δ = CENTRAL ANGLE
U.P. = UTILITY POLE	F.D.H. = FOUND DRILL HOLE	P.R.C. = POINT OF REVERSE CURVE	-/- = WOOD FENCE
B.O.B. = BASIS OF BEARINGS	P.T. = POINT OF TANGENCY	P.C. = POINT OF CURVATURE	-X- = CHAIN LINK FENCE
A/C = AIR CONDITIONING PAD	E.N.C. = ENCROACHMENT	F.N.D. = FOUND NAIL/DISK	= C.B.S. WALL
A = ARC DISTANCE	F.H. = FIRE HYDRANT	P.C.C. = POINT OF COMPOUND CURVE	B/C = BLOCK CORNER
BLDG. = BUILDING	F.I.P. = FOUND IRON PIPE	M/L = MONUMENT LINE	R = RADIUS
C.B. = CATCH BASIN	F.I.R. = FOUND REBAR	N.G.V.D. = NATIONAL GEODETIC VERTICAL DATUM	RAD. = RADIAL
C.B.S. = CONCRETE BLOCK STRUCTURE	I.F.E. = LOWEST FLOOR ELEVATION	O.E. = OVERHEAD ELECTRIC LINE	RES. = RESIDENCE
CH. = CHORD DISTANCE	I.P. = LIGHT POLE	P.G. = PAGE	R/W = RIGHT OF WAY
CL. = CLEAR	(M) = MEASURED	P.O.B. = POINT OF BEGINNING	SEC. = SECTION
C/L = CENTER LINE	(R) = RECORD	P/L = PROPERTY LINE	S.I.P. = SET IRON PIPE
CONC. = CONCRETE	(R & M) = RECORD & MEASURED	N.T.S. = NOT TO SCALE	STY. = STORY
			SWK = SIDEWALK
			UE. = UTILITY EASE
			OVERHEAD ELECTRIC
			UTILITY CONC. POLE
			WATER METER
			METAL FENCE

DRC

PZ22-14000004
6/1/2022